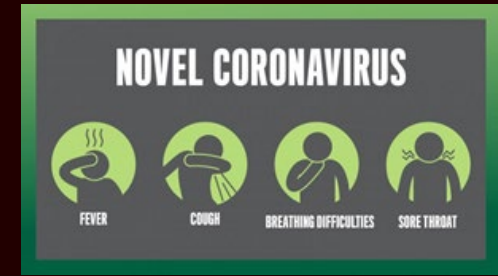




PADUA COLLEGE COVID SITE PLAN – BASKETBALL Assisi and Greccio Campus



Drop Off and Pick Up Zones

- Padua Officials will guide you at **Drop off** and **Pick up** zones, please follow their instruction
- Clearly identifiable **Drop off** and **Pick up** Zones for students. Parents/Caregivers and Buses are to only use these designated areas during the allocated times
- Only players, coaches and officials are permitted to enter the venue.
- Spectators will be permitted for certain matches in accordance with social distancing, health and hygiene requirements
- Players are not to arrive more than 15min prior to the start time.
- At the conclusion of the match all players must vacate the venue immediately via the exit path to the **pickup** zone

Entry and Exit Paths

- Padua officials will guide you at **Entry** and **Exit** Points
- Please follow the directions of the paths for all entry and exit paths as per the map

Site Registration

- All persons entering the venue must register their attendance, including players and adults including coaches, officials, staff, spectators, first aid and medical.

Download the App

We encourage all members of the community to download the COVID Safe App to assist with contact tracing [Department of Health COVID-19 App](#)

Warm Up

- Players may warm up 15 minutes before their game following the directions to the outside Assisi court for all matches on the Assisi Campus

PLEASE NOTE: TEAMS are expected to follow the COVID Site plan for PADUA College and instruction as given by the **PADUA OFFICIALS**

Health and Hygiene

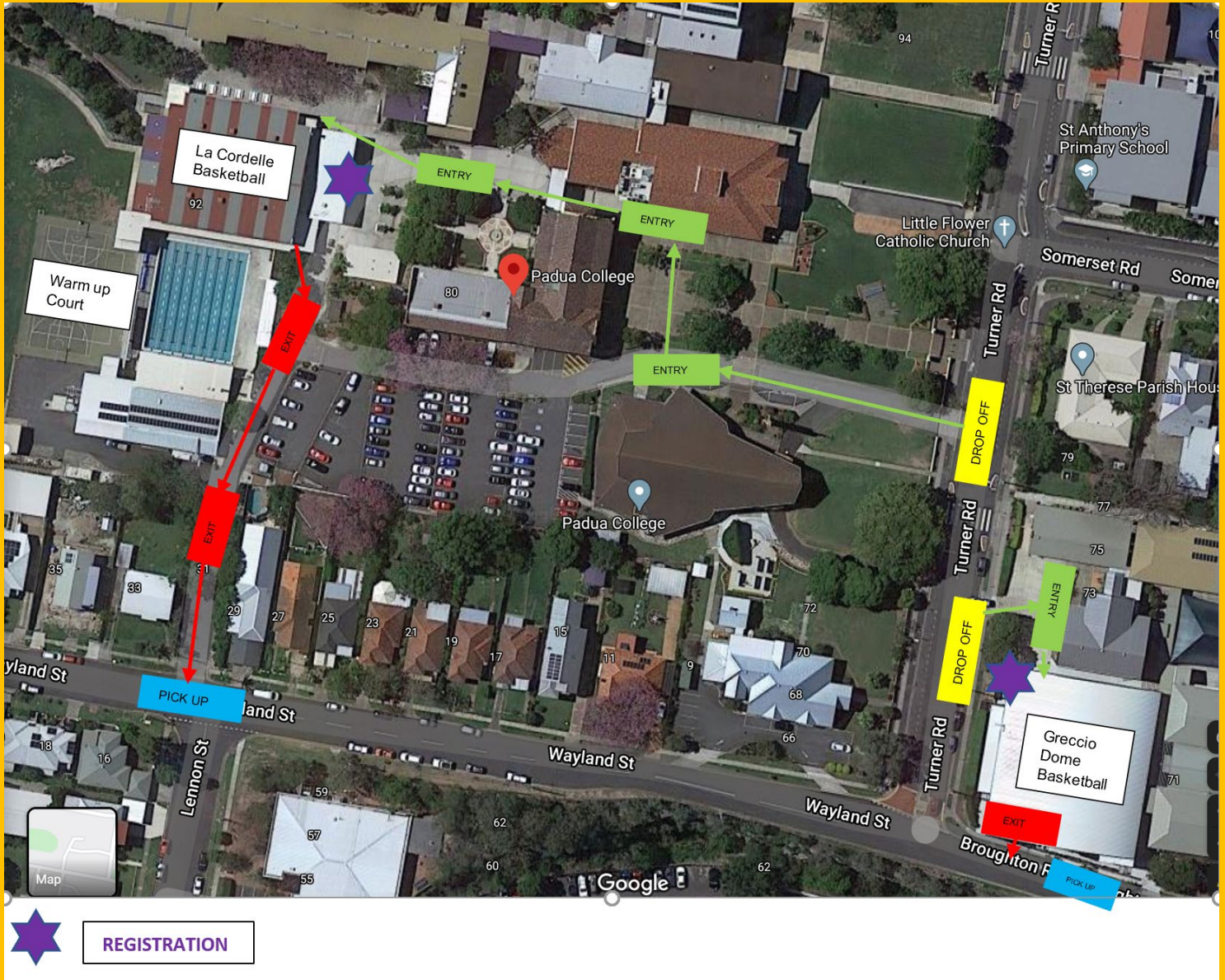
- Hand sanitiser stations will be available in each zone. Players, coaches and managers are expected to sanitise before, during and after the game.
- Shower at home both pre and post-game
- Come to the venue dressed in playing uniform. There will be no access to changerooms.
- Toilet facilities will be available in each zone.
- All equipment like basketballs and tennis balls will be provided by each team coach. Players are not to bring any unnecessary equipment.
- Follow the displayed signage at the venue and physical distance at 1.5m
- If you are displaying signs and symptoms of feeling unwell STAY AT HOME and seek appropriate medical advice
- Those who display symptoms will not be permitted entry
- Each zone will be cleaned before and after each match

Canteen Facilities

- No canteen facilities are available and all water fountains will be closed
- All players, coaches, officials and spectators are required to bring their own water bottles to the venue. Two full water bottles per player is recommended.

Padua Officials

- All Padua Officials will be easily identifiable in **yellow vests** and Padua caps
- Padua Officials will guide you at **Drop off** and **Pick up** zones and direct you to your entry and exit points for the court you will be playing in
- Padua Officials will ensure all persons in the facility register and comply with the COVID site plan
- If you have a questions or concern as a Padua team, visiting team or spectator please seek clarification and direction from a Padua official



Padua College
80 Turner Rd
Kedron



Coronavirus (COVID-19)

SIMPLE STEPS TO HELP STOP THE SPREAD.

Cough or sneeze into your arm

Use a tissue

Bin the tissue

Wash your hands

TOGETHER WE CAN HELP STOP THE SPREAD AND STAY HEALTHY.
For more information about **Coronavirus (COVID-19)** visit health.gov.au

Australian Government