

SCHOOL CONTACT PERSONNEL

Principal:
Mr Mark Stower

Learning Enrichment Program Leaders:
Mrs Joanne Bayley (Junior School)
Ms Sally England (Middle School)
Ms Kath Underhill (Senior School)

Enrolments Officer:
Mrs Nicole Weldon



VILLANOVA COLLEGE

24 Sixth Avenue
Coorparoo Qld 4151

www.vnc.qld.edu.au

PO Box 1166
Coorparoo DC 4151
Ph: 3394 5690

Email:
enrolments@vnc.qld.edu.au



Enrolment Application and Support Procedures for Students requiring Significant Educational Adjustments

VILLANOVA COLLEGE

Vincet Veritas | Truth Conquers

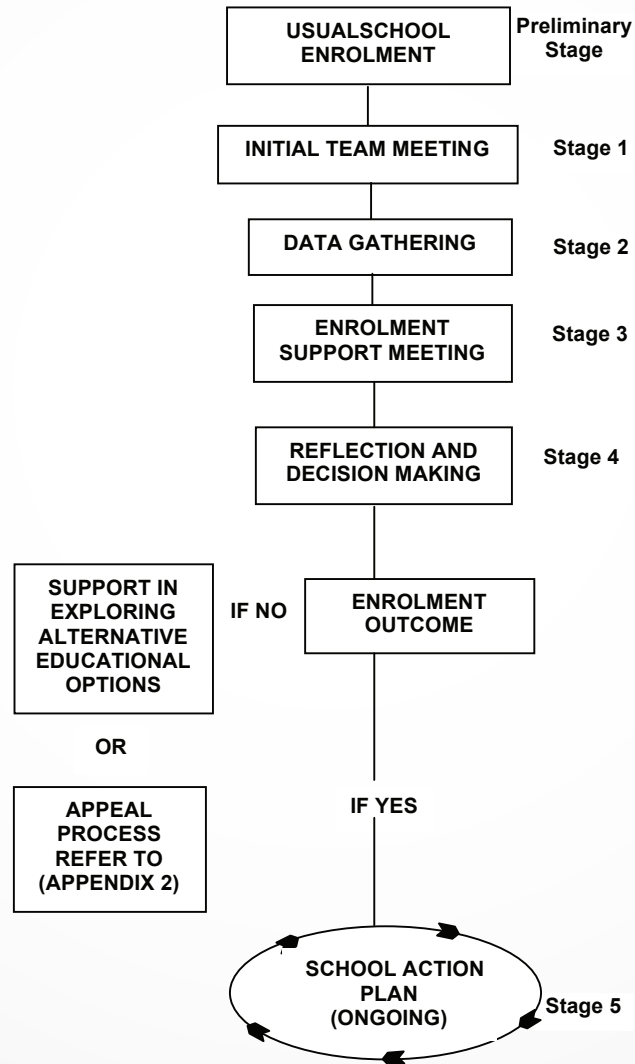
Introduction and Rationale

The Enrolment application and Support Procedures for Students requiring Significant Educational Adjustments operates within the Policy-Inclusive practices in Catholic schools in Queensland (QCEC). This policy statement reflects the ongoing commitment of Villanova College to the incorporation of inclusive practices and is guided by the principles of justice as reflected Church, education and legal areas. The enrolment of a student requiring significant educational adjustments is the concern of the whole school community within the church

The process seeks to reveal and clarify the characteristics of the learner, and to assess the relevant adjustments for accessing the learning and the implications of these for the school, the family and the student.

A partnership approach is foundational to this process and leads to an appropriate response to the student's educational needs. The enrolment application and support procedures are used when it is considered likely that significant educational adjustments will be needed to support a student's initial enrolment and/or for ongoing service provision.

ENROLMENT APPLICATION AND SUPPORT PROCEDURES For Students requiring Significant Educational Adjustments



Preliminary Stage

Make an Application for Enrolment

Stage 1 Parent Meeting

Student Enrolment Team meeting preparation
Partnership Formed

Stage 2 Data Gathering

Observe/Collect Data
Explore Needs

Stage 3 Enrolment Support Meeting

Examine Implications
Partnership Strengthened

Stage 4 Reflection & Decision Making

Principal Makes Decision
Informs Relevant Others

Stage 5 School Action Plan

Plan Action as Necessary
Ongoing program monitoring &
Review of adjustments
Returning to Stage 2 (if necessary)